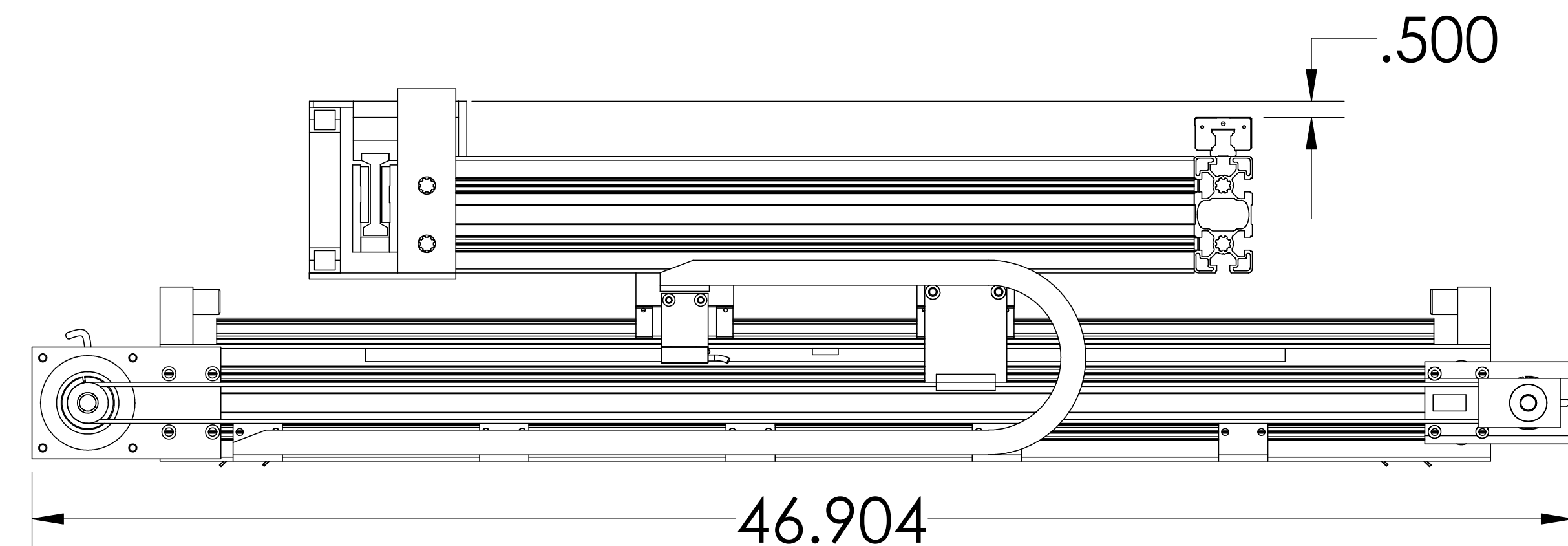
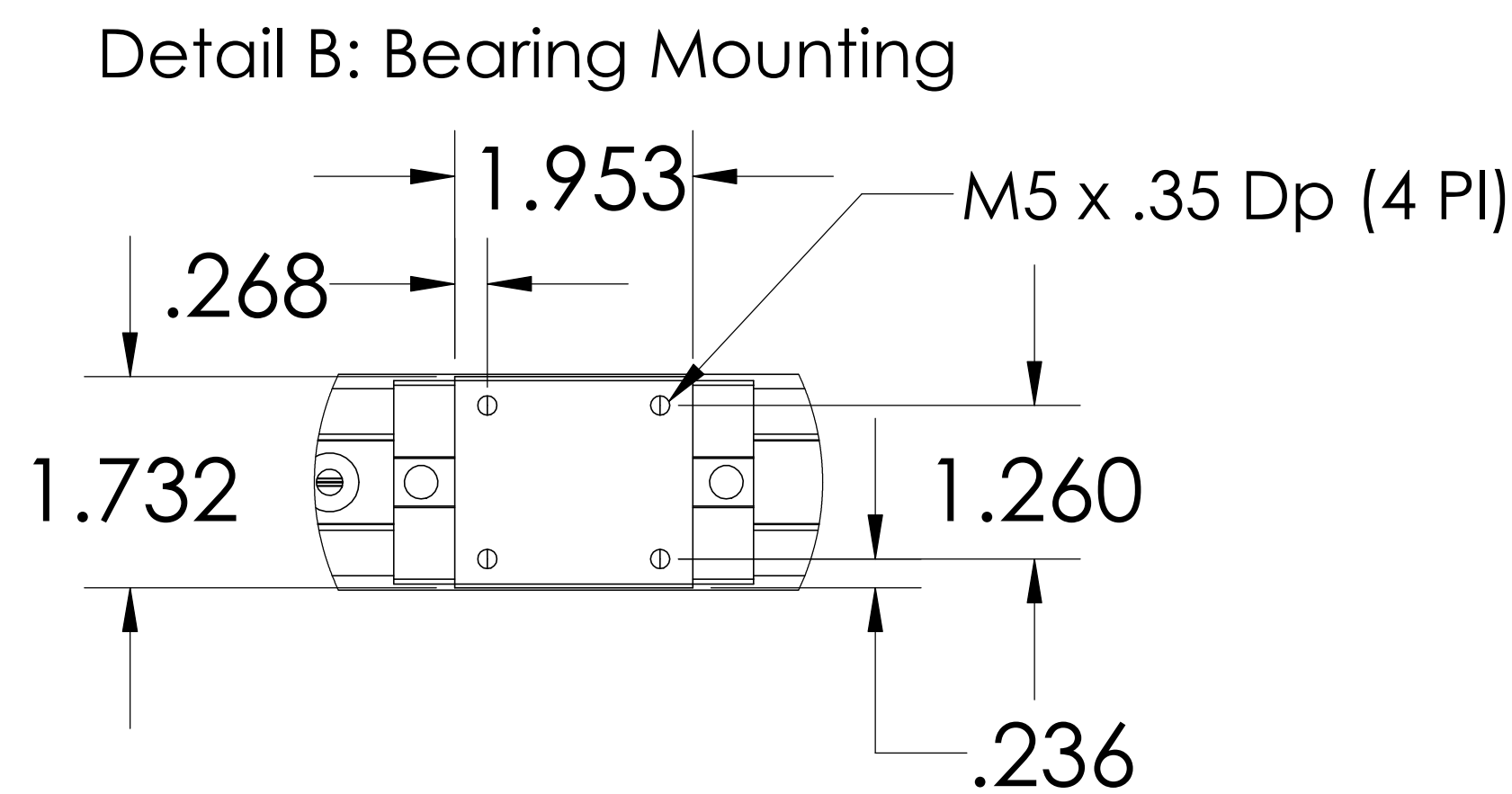
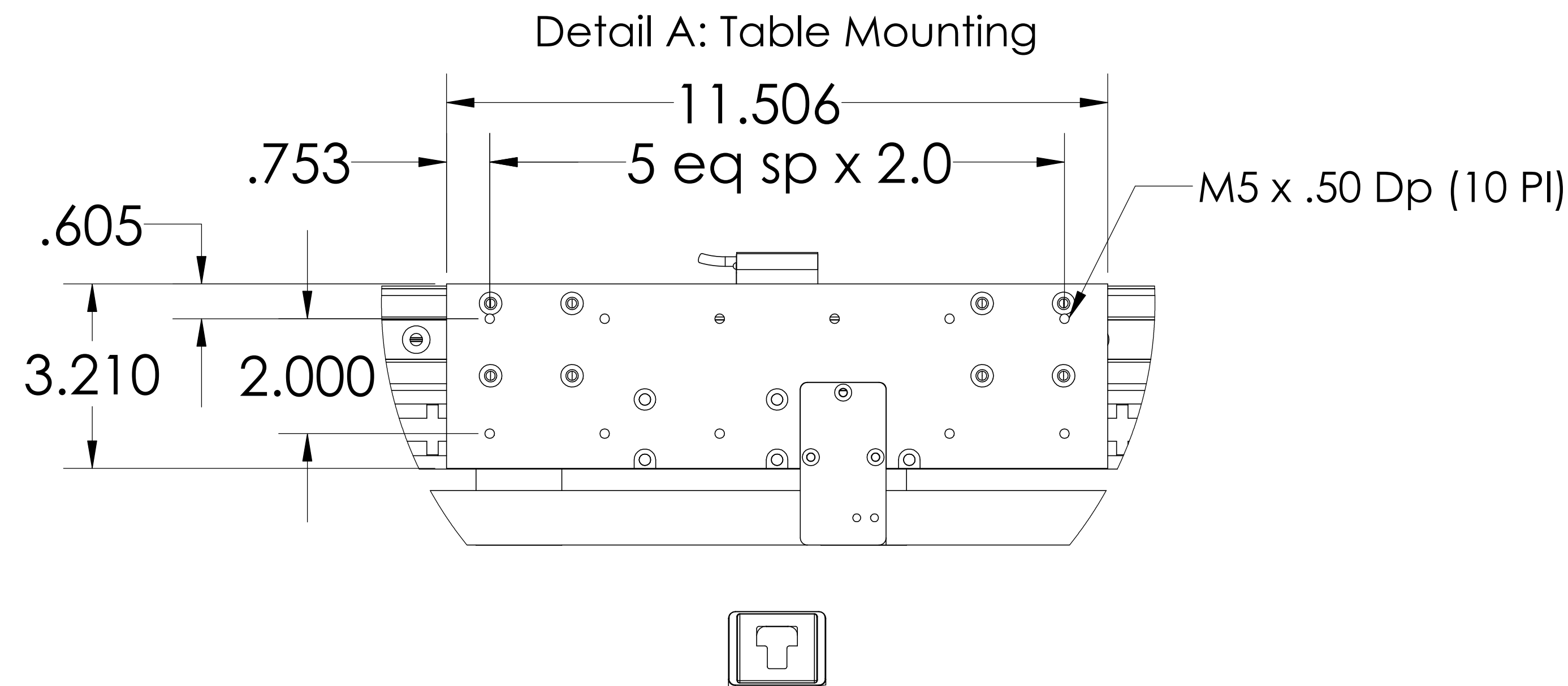
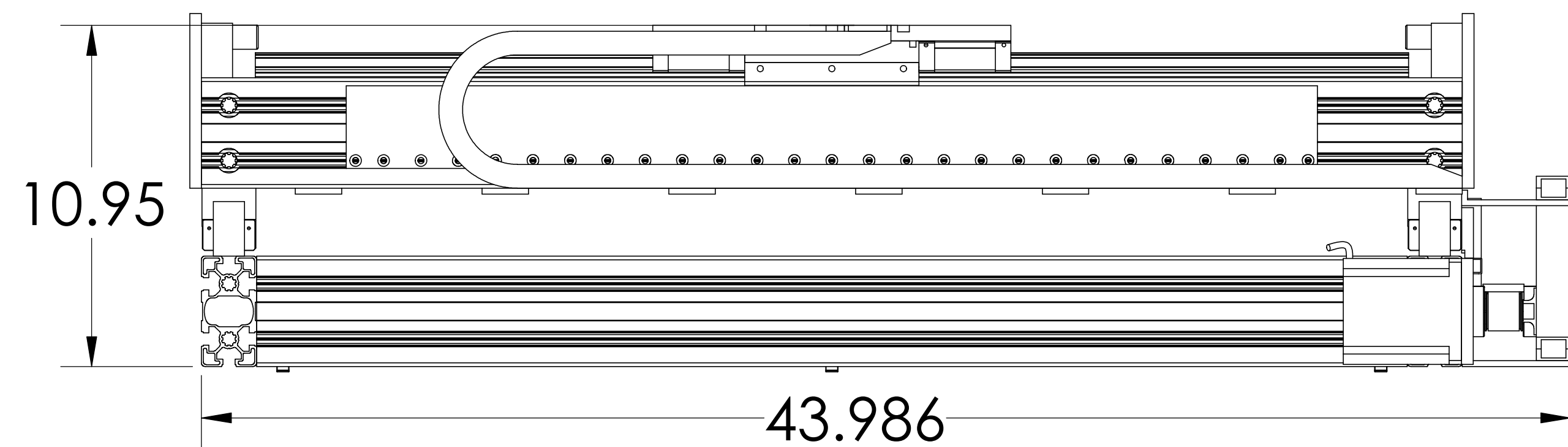
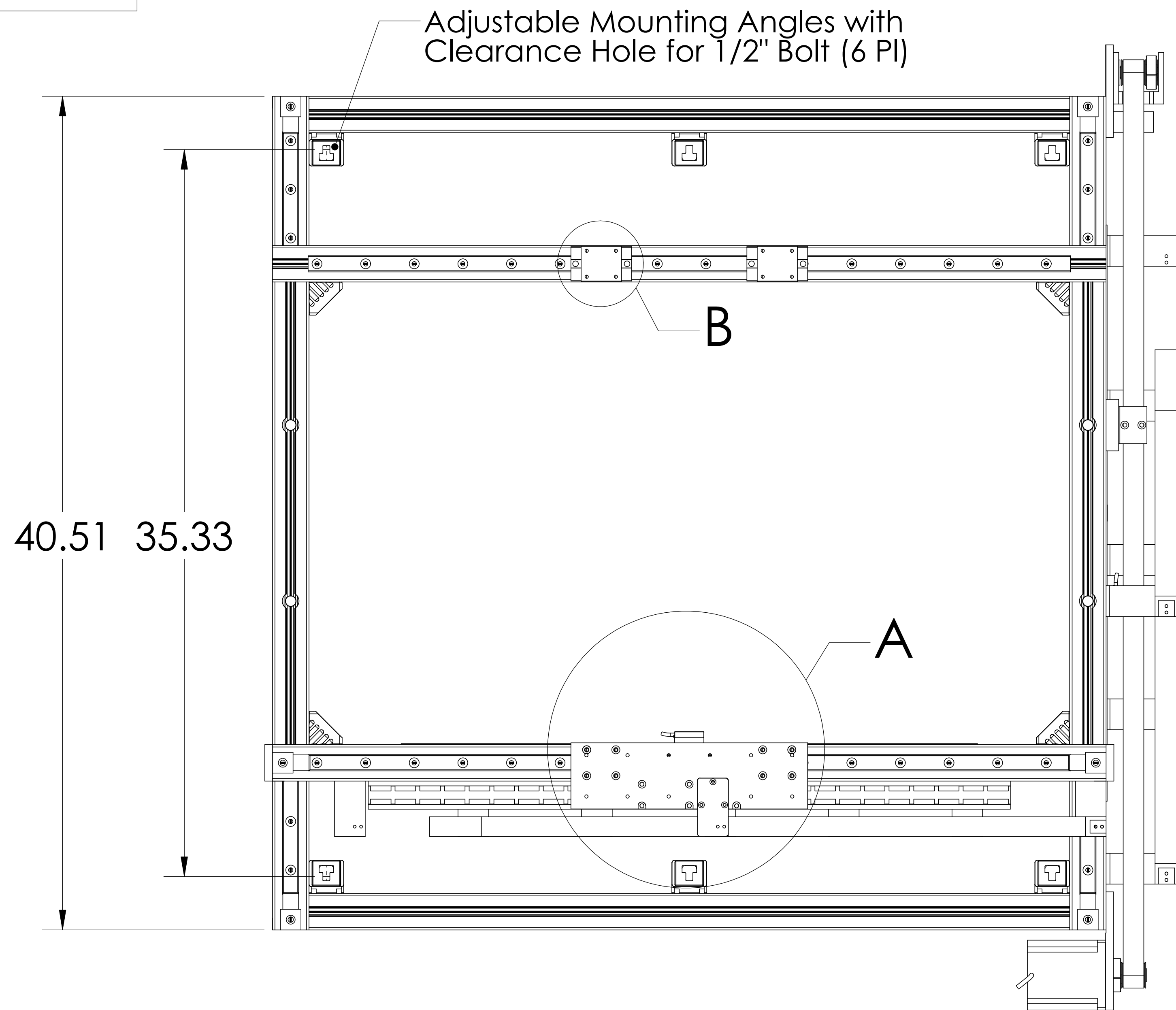


These drawings and specifications are the property of H2W Technologies, Inc. They are issued in confidence and shall not be reproduced, copied, or used without written permission from H2W Technologies, Inc.



Stroke:  
X-Axis = 25in (635 mm)  
Y-Axis = 25in (635mm)

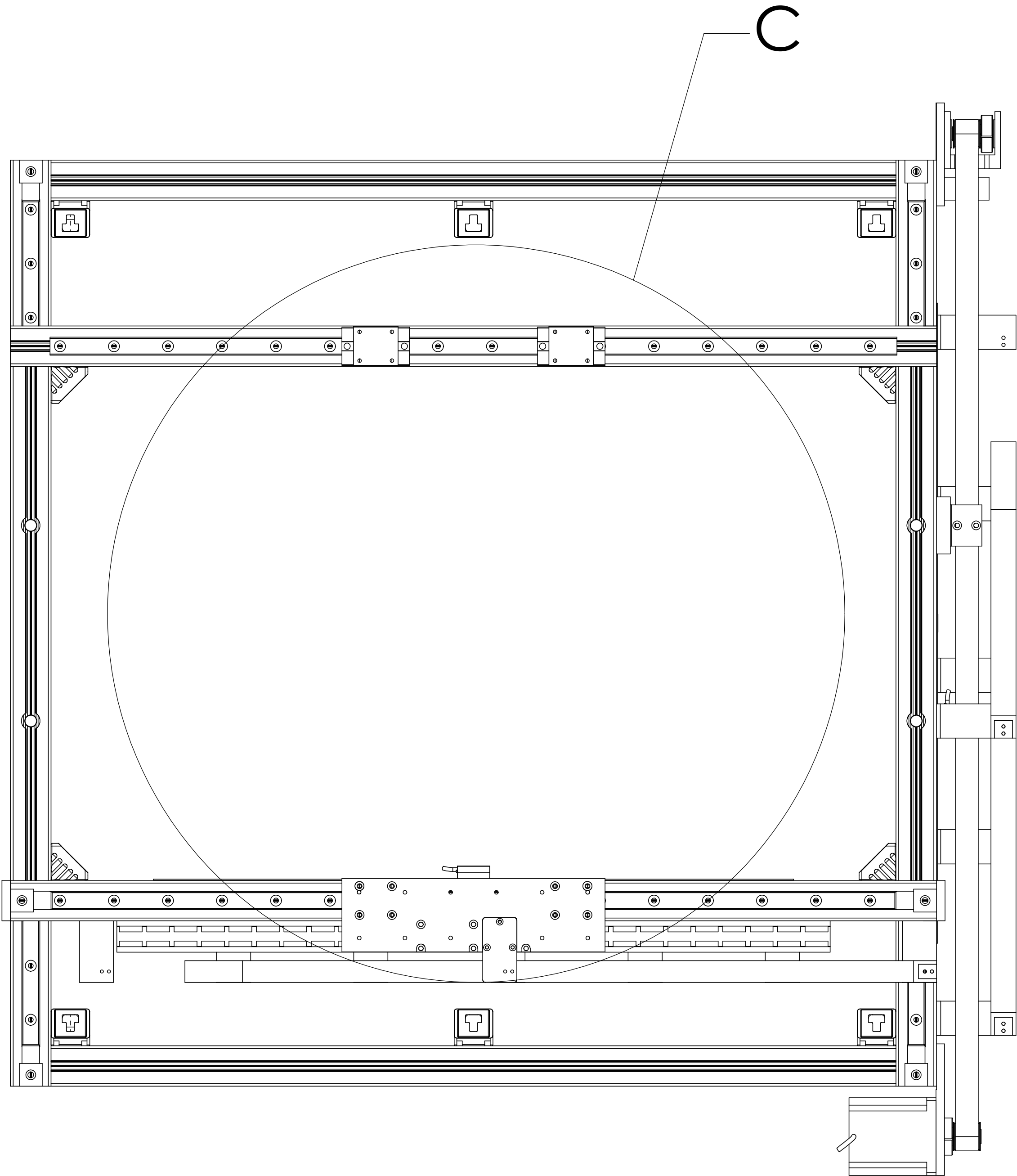
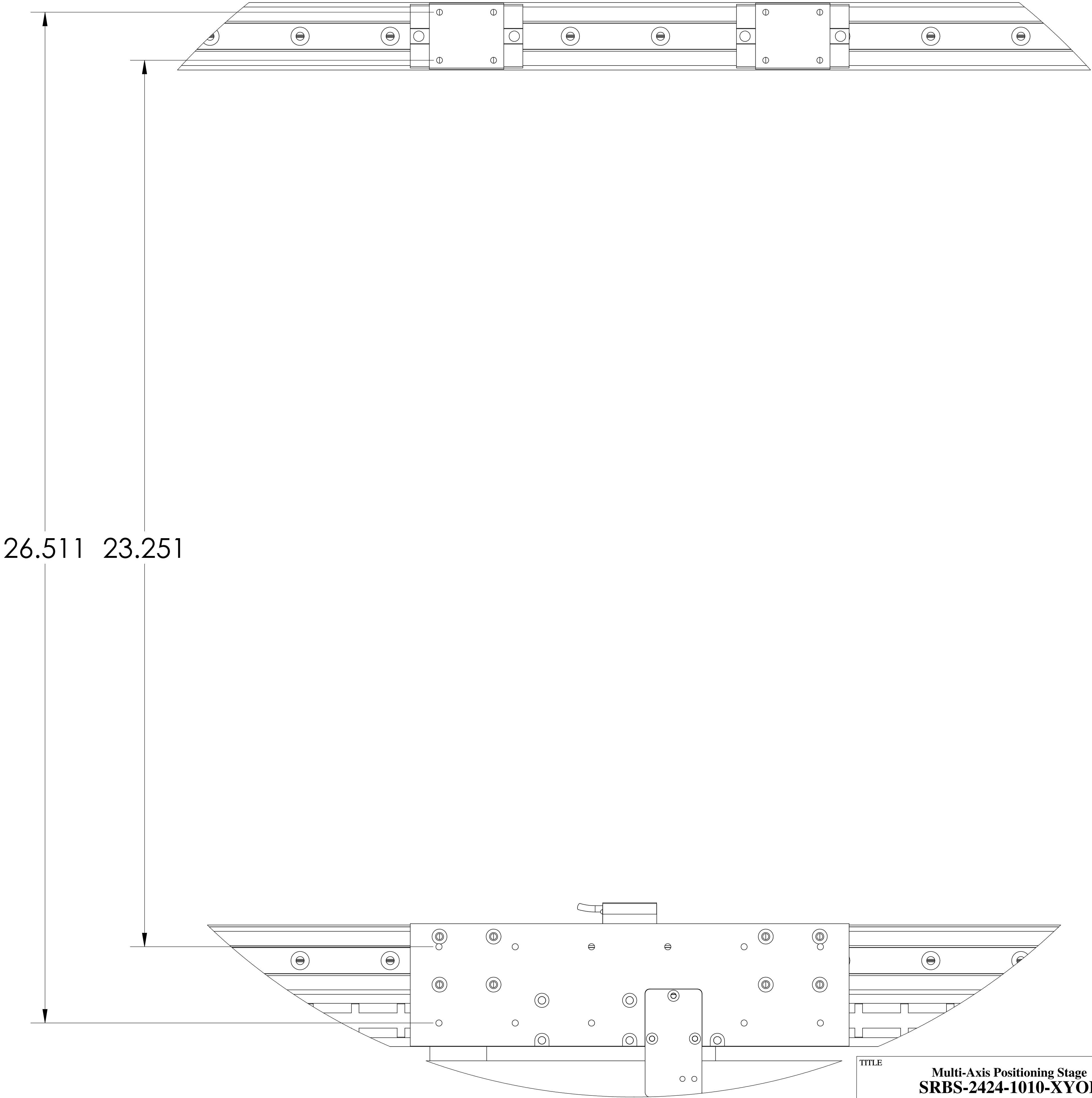
ALL AXIS SHOWN AT MID-STROKE

UNLESS SPECIFIED OTHERWISE: All dimensions are in inches Standard Tolerances are as follows XXX ±.005 ANGLES ±1° XX ±.010 FILLETS AND X ±.020 CORNERS .010 Remove All Burrs and Sharp Edges				MATERIAL		TITLE	
				FINISH		Multi-Axis Positioning Stage SRBS-2424-1010-XYOF	
DRAWN OOG	DATE 8-17-10	APPROVED MPW	DATE 8-17-10	DWG # 47-0001	REV A	SHEET 1 of 3	

**H2W Technologies, Inc.**  
26470 Ruether Ave #102 Santa Clarita, CA 91350 USA  
Tel: (661) 251-2081 Fax: (661) 251-2067  
www.h2wtech.com

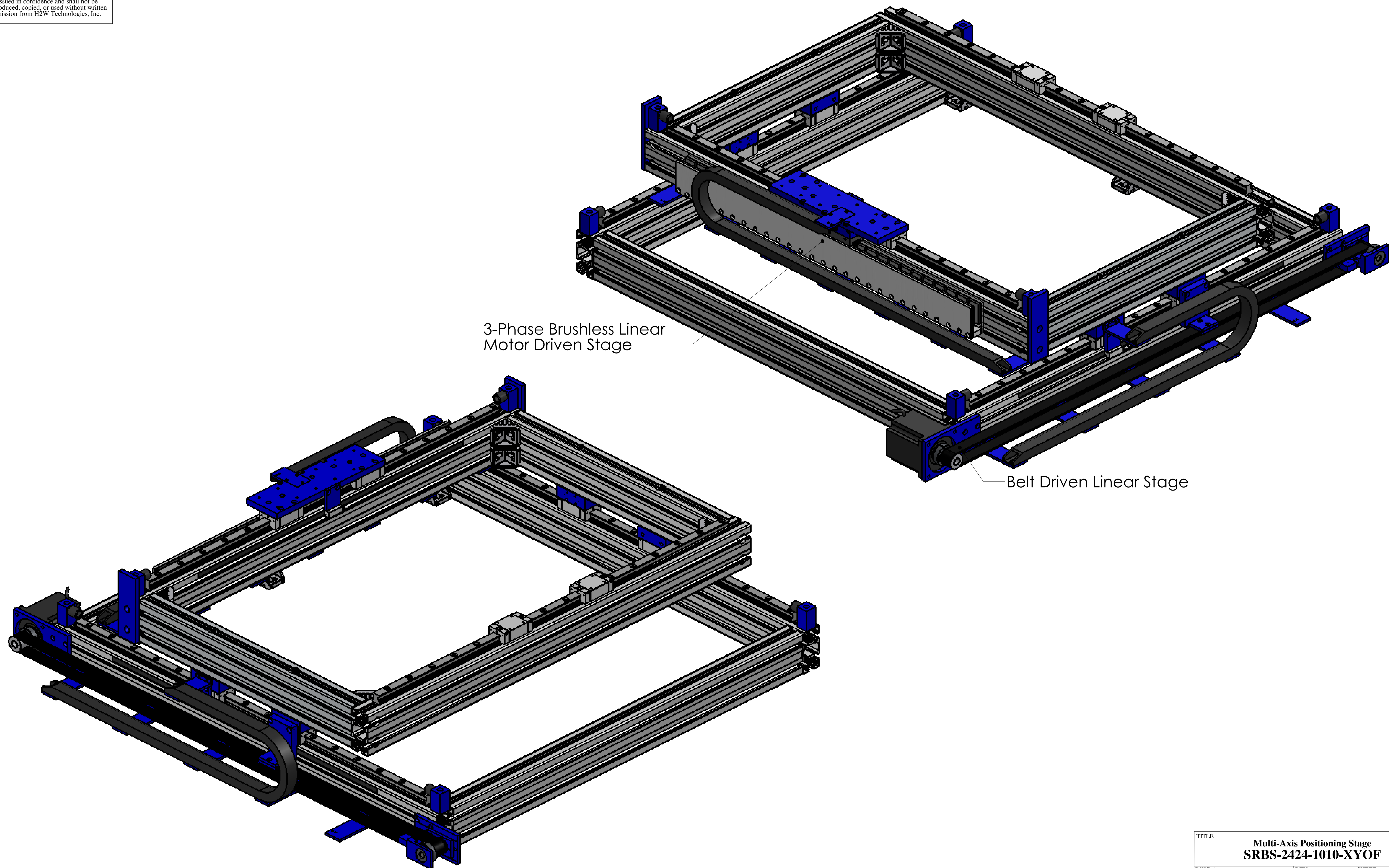
These drawings and specifications are the property of H2W Technologies, Inc. They are issued in confidence and shall not be reproduced, copied, or used without written permission from H2W Technologies, Inc.

Detail C: Bearing Spacing



TITLE			
Multi-Axis Positioning Stage			
SRBS-2424-1010-XYOF			
DWG #	REV	SHEET	
47-0001	A	2 of 3	

These drawings and specifications are the property of H2W Technologies, Inc. They are issued in confidence and shall not be reproduced, copied, or used without written permission from H2W Technologies, Inc.



3-Phase Brushless Linear  
Motor Driven Stage

Belt Driven Linear Stage

TITLE			
Multi-Axis Positioning Stage SRBS-2424-1010-XYOF			
DWG #	47-0001	REV	A
SHEET		3 of 3	